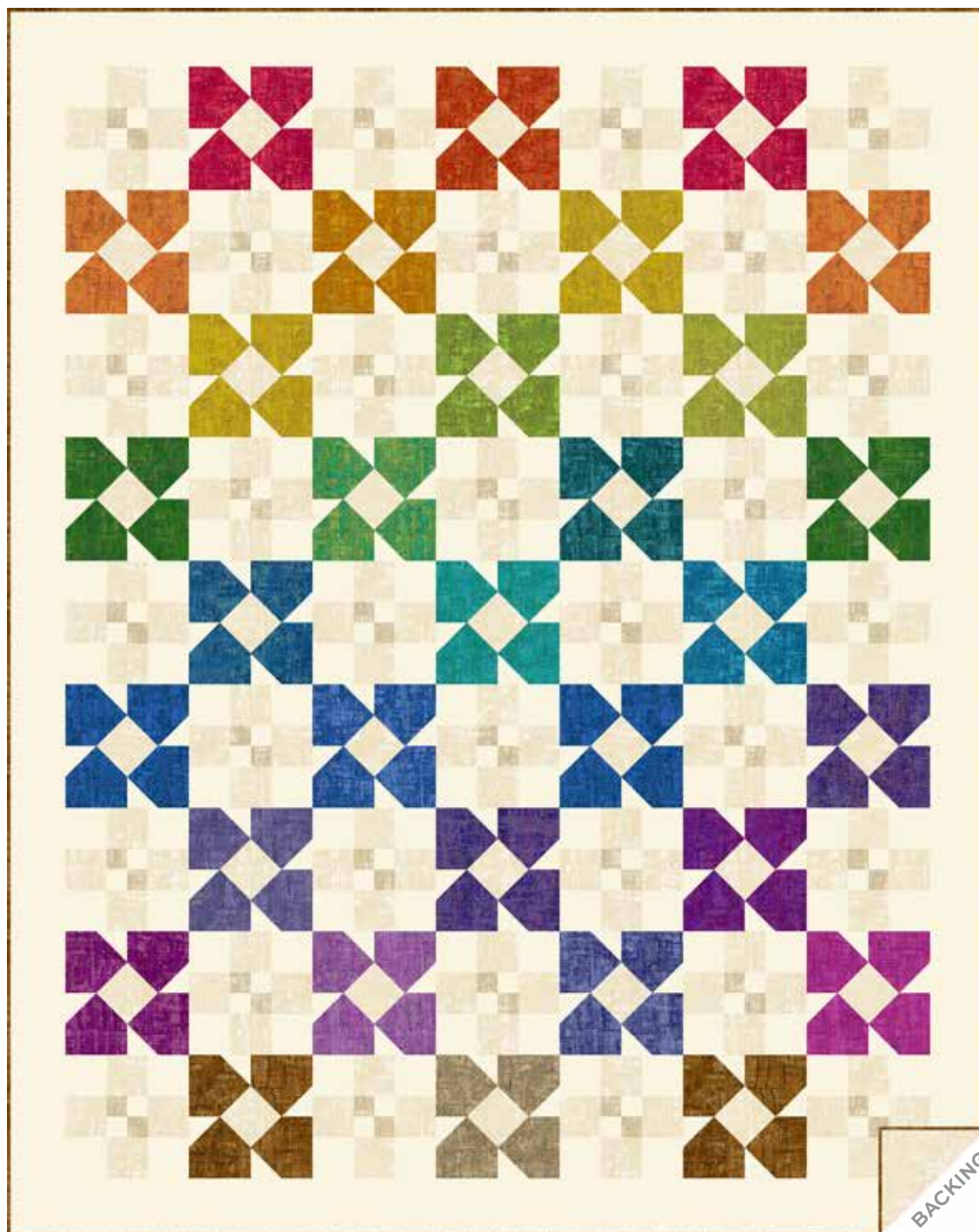


Nitty Gritty

JORDAN FABRICS



Flower Patch Quilt designed by: **Janet Houts**

Quilt Size: **71" x 89"** • Skill Level: **Confident Beginner**

Flower Patch Quilt

Introducing Andover Fabrics new collection: **NITTY GRITTY** by Jordan Fabrics

Quilt designed by Janet Houts

Quilt finishes 71" x 89"

32 Nine-Patch Blocks: 9" x 9"

31 Flower Blocks: 9" x 9"

Colorful, abstract Flower Blocks alternate with simple-to-piece Nine-Patch Blocks to make this quilt topper. The colors are arranged in a somewhat rainbow order, shifting from one corner of the quilt to the opposite corner.

Cutting Directions

Note: Read assembly directions before cutting patches. All measurements are cut sizes and include ¼" seam allowances. A fat ¼ is an 18" x 20"-22" cut. Borders are cut the exact lengths required plus ¼" seam allowances. WOF designates the width of fabric from selvedge to selvedge (approximately 42" wide).

Cutting for ONE Flower Block

10" Square: Cut (4) squares 5"

Fabric 29: Cut (4) squares 2¾"

Fabric 33: Cut (4) squares 2¾"

Cutting for ENTIRE Quilt

10" Square Pack

Cut patches required for number of blocks from each fabric. Read Step 1.

Fabric 29

Cut (128) squares 3½" for Nine-Patch Blocks

Cut (124) squares 2¾" for Flower Blocks

Fabric 30

Cut (7) strips 2" x 21" for Four-Patch Units

Making the Quilt

When making the blocks, refer to these labels and the list of fabrics on the last page of the pattern.

1 1434-R	2 1434-O	3 1434-LO	4 1434-Y1
5 1434-Y	6 1434-V	7 1434-LG	8 1434-G
9 1434-G1	10 1434-LT	11 1434-T	12 1434-T2
13 1434-T1	14 1434-B	15 1434-B1	16 1434-B2
17 1434-P2	18 1434-P1	19 1434-P	20 1434-E
21 1434-LE	22 1434-LP	*23 1434-K	*24 1434-C
*25 1434-LC	*26 1434-L	*27 1434-N1	*28 1434-N2
29 1434-LN	30 1434-N	31 1434-N3	32 1434-N4

33 CS-10-Cream

*not used in quilt

Fabric Requirements

Yardage

10" Square Pack

blocks

Fabric 29

blocks 2 yards

Fabric 30

blocks Fat ¼

Fabric 33

blocks 3½ yards

Fabric 32 (Binding)

¾ yard

Fabric 29 (Backing)

5½ yards

Fabric 33

Cut (2) side borders 4½" x 81½"

Cut (2) top/bottom borders 4½" x 71½"

Cut (128) squares 3½" for Nine-Patch Blocks

Cut (124) squares 2¾" for Flower Blocks

Cut (7) strips 2" x 21" for Four-Patch Units

Binding

Cut (9) strips 2½" x WOF for binding

Backing

Cut (2) lengths 41" x 99", pieced to fit quilt top with overlap on all sides

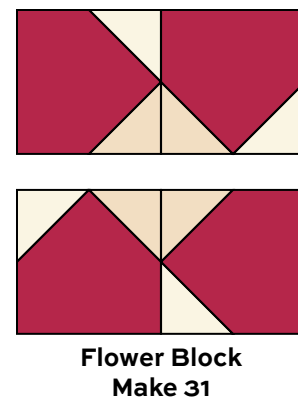
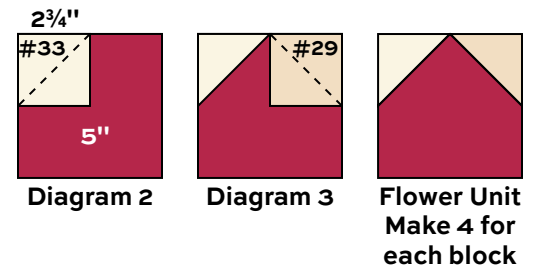
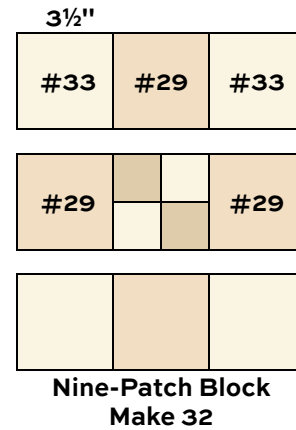
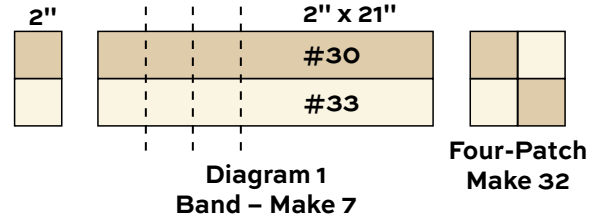
Flower Patch Quilt

Making the Quilt

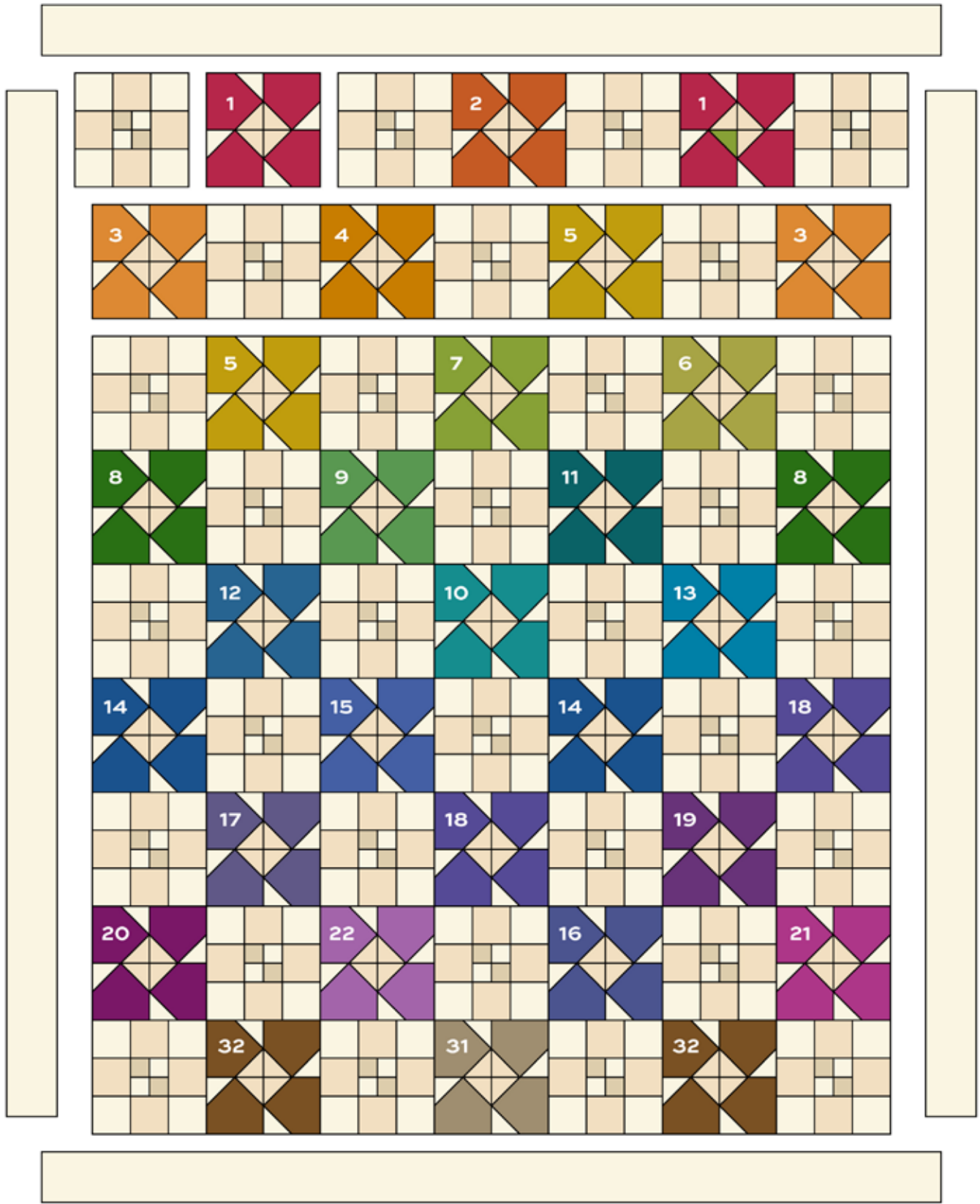
- The center of the Nine-Patch Blocks are made with a strip-piecing technique. Join Fabric 30 and Fabric 33 strips to make a pieced band. Press seam allowances toward Fabric 30. Make 7 bands like this. Cut 2"-wide segments from the bands (Diagram 1). Cut a total of 64 segments. Join 2 segments as shown to make 32 Four-Patch units.
- Referring to the Nine-Patch Block diagram, arrange Fabric 29 and Fabric 33 ($3\frac{1}{2}$ " squares) and a Four-Patch Unit into 3 rows. Join the parts into rows, and then join the rows. Make 32 Nine-Patch Blocks.
- The 4 squares needed for one Flower Block can be cut from each 10" square. Some colors are not used as listed above. Note that some fabrics have 2 squares in the pack and are used to make 2 flowers. All 10" squares of fabrics #1-21 and #31-32 are "flowers."
- Each Flower Block uses 4 units made with a quick stitch-and-flip technique. Draw a diagonal line on the wrong side of the Fabric 29 and 33 ($2\frac{3}{4}$ " squares). With right sides together, position a Fabric 33 square on the top left corner of a colored 5" square (Diagram 2). Stitch on the drawn line. Trim away the excess and press the triangle up. Repeat this step with a Fabric 29 square on the top right corner (Diagram 3). Make 4 Flower Units alike for each block.
- Join 4 of the units to make a Flower Block, rotating the units as shown. Make 31 Flower Blocks.
- Referring to the Quilt Assembly, arrange the blocks alternately into 9 rows of 7 blocks each. Pay careful attention to the placement of the Flower Blocks. When you are satisfied with the arrangement, join the blocks into rows, and then join the rows.
- Sew the longer border strips to the sides of the quilt. Join shorter strips to the top and bottom.

Finishing the Quilt

- Layer the quilt with batting and backing and baste. Quilt in the ditch around borders and patches. Bind to finish the quilt.



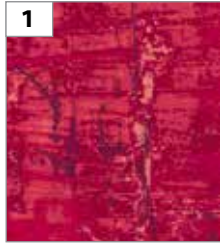
Flower Patch Quilt



Quilt Assembly

Nitty Gritty

JORDAN FABRICS



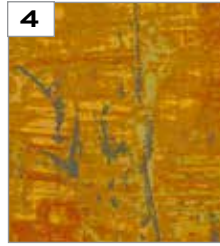
1434-R



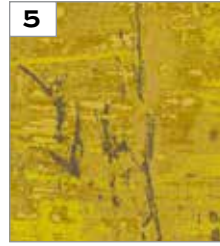
1434-O



1434-LO



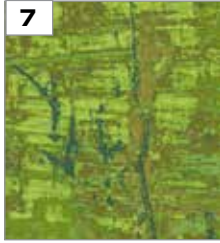
1434-Y1



1434-Y



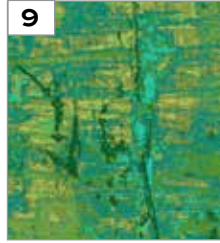
1434-V



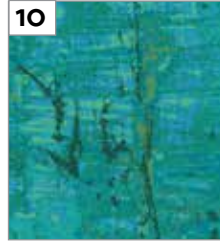
1434-LG



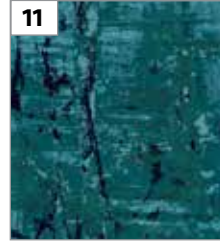
1434-G



1434-G1



1434-LT



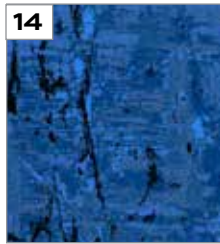
1434-T



1434-T2



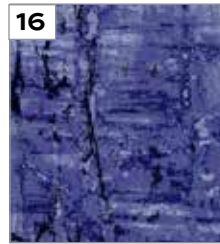
1434-T1



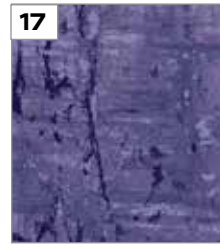
1434-B



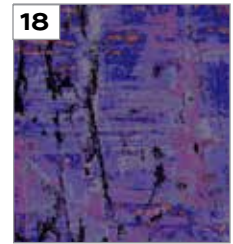
1434-B1



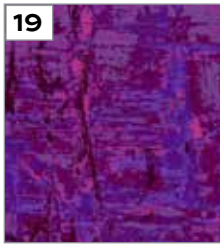
1434-B2



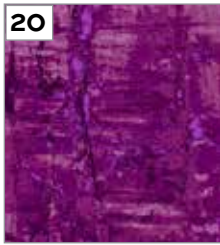
1434-P2



1434-P1



1434-P



1434-E



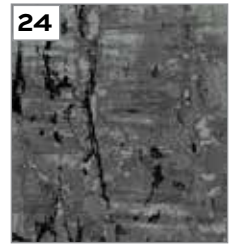
1434-LE



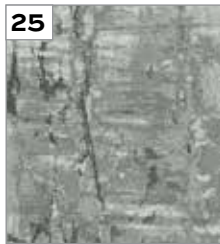
1434-LP



1434-K*



1434-C*



1434-LC*



1434-L*



1434-N1*



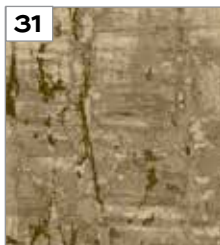
1434-N2*



1434-LN



1434-N



1434-N3



1434-N4

*Additional fabric
from Century Solids
by Andover Fabrics*



CS-10-Cream

*Indicates fabrics not used in quilt pattern.

Fabrics shown are 50% of actual size.

Free Pattern Download Available

1384 Broadway, 24th Floor, New York, NY 10018

Tel. (800) 223-5678 • andoverfabrics.com

8/1/24